

DATA SHEET

# Trustwave Vulnerability Management

## STAY AHEAD OF NETWORK VULNERABILITIES

### BENEFITS

- Increase visibility by identifying your IT assets and associated vulnerabilities
- Leverage expertise and intelligence gathered by the SpiderLabs research team
- Save time and resources when remediating vulnerabilities with prioritized results
- Supplement your team with managed scanning and testing services from SpiderLabs

For most organizations today, running applications and databases on their IT network is a big part of running their business. Knowing their IT network is susceptible to vulnerabilities such as software flaws and configuration issues, security professionals need to identify, classify, remediate or mitigate the vulnerabilities that attackers could successfully exploit to access valuable data.

### GET THE COMPLETE PICTURE

Trustwave Vulnerability Management provides IT and security professionals with insight into their network vulnerabilities and exposure to attack and/or compromise from outside and inside the corporate firewall. This helps customers meet both IT security objectives – such as protecting confidential data and ensuring the integrity and availability of IT systems – and compliance goals, including auditing security controls to safeguard sensitive information.

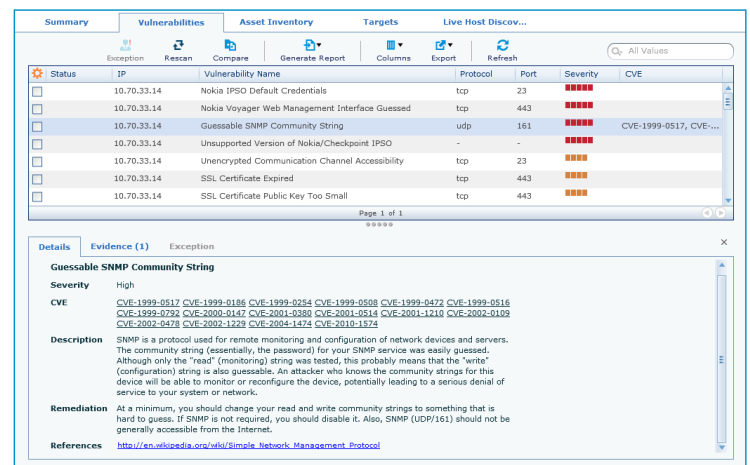
#### External Vulnerability Scanning

Regularly scheduled or ad-hoc in-the-cloud, external scanning offers insight into what vulnerabilities are being exposed through your firewall to the outside world. Regular vulnerability updates are provided by the SpiderLabs Security Research Team.

#### Internal Vulnerability Scanning

Internal scanning offers the same industry leading vulnerability technology as external scanning, providing you with a hacker's view of vulnerabilities inside the network behind your firewall.

Trustwave Vulnerability Management is available as a self-service application or as a managed scanning service, part of Trustwave Managed Security Testing service.



*With prioritized scan results and actionable report details, Trustwave Vulnerability Management helps you find and fix vulnerabilities faster.*

## COMPREHENSIVE SCANNING SERVICES FROM THE EXPERTS

Managed Security Testing from Trustwave SpiderLabs® allows IT and information security teams to take a programmatic approach to vulnerability management through managed vulnerability scanning across databases, networks and applications, as well as, in-depth manual penetration testing of networks and applications.

With a comprehensive menu of services and multiple levels of testing that get increasingly advanced, Trustwave offers the flexibility for organizations to choose the level of testing that best supports their business. Scans and tests are performed by SpiderLabs experts and a report with validated results is shared with the customer.

## SELF-SERVICE SUPPORT

Users of self-service scanning can schedule, configure and run scans themselves via Trustwave's award-winning secure TrustKeeper web portal. Upon completion of a scan, the user receives a list of raw results from Trustwave Vulnerability Management that they interpret on their own.

### The TrustKeeper web portal also gives users access to:

- Summaries – Dashboard views of scan results including trending analysis
- Flexibility – Support for multiple scan types, including light inventory and full vulnerability scanning
- Visibility – Multiple scan profiles for varying visibility needs by network location
- Reporting – General vulnerability and compliance-based reporting
- Alerts – Customizable notifications including upcoming scans, scan kick-offs and completion

## ABOUT TRUSTWAVE SPIDERLABS®

### Expertise

Our team consists of many of the top security professionals in the world. With career experience ranging from corporate security executives to security research labs as well as federal and local law enforcement, our team has the expertise and dedication to stay ahead of the issues and threats affecting your organization's security posture.

### Experience

We have performed thousands of incident response and forensic investigations as well as application and network security penetration tests for customers around the globe – from startups to Fortune 50 companies.

### Facilities

We maintain the most advanced security testing and research labs in the industry – located in every region across the globe to deliver the best quality of service to you.

### Confidentiality

We work closely with you to ensure that all our services are performed with strict confidentiality and under rigorous legal oversight.

The screenshot shows the 'Configuration' page in the Trustwave Vulnerability Management web portal. The page has a navigation bar with tabs for 'Scan Overview', 'Configuration', 'Reports', 'Disputes', 'Exceptions', 'Notifications', and 'Account'. Below the navigation bar, there are system notifications and customer information (Customer: TVM\_Parent). A summary bar shows 'External Targets: 108/1000', 'Scans: 63/500', and 'License Expires: 2020-04-02'. The main content area features a table of scan configurations and a 'Configuration Details' sidebar for the selected configuration 'BlackOutPageTesting-1'.

Configuration Name	Status	Scan Type	Schedule	Next Scan
MilitaryTimeViaConfig-AM	Enabled	PCI Scan	Monthly	2015-08-23
MilitaryTimeWithBlkOutViaConfig	Enabled	PCI Scan	Monthly	2015-08-23
Par 4-23-2013	Enabled	Vulnerability Scan	Monthly	2015-08-23
BlackOutPageTesting-1	Enabled	PCI Scan	Monthly	2015-08-24
Parent Full 2	Enabled	Vulnerability Scan	Quarterly	2015-10-24
Config test	Enabled	Vulnerability Scan	Immediate	
config test without config export	Enabled	Vulnerability Scan	Immediate	
config test2	Enabled	Vulnerability Scan	Immediate	
no config test	Enabled	Vulnerability Scan	Immediate	
parent-Host-1	Enabled	Live Host Discovery	Immediate	
Parent-Inventory	Enabled	Port Service Fingerprint	Immediate	

**Configuration Details for BlackOutPageTesting-1:**

- Configuration Name: BlackOutPageTesting-1
- Scanner: External Scanner
- Scan Type: PCI Scan
- Schedule: Monthly on the 24th at 10:48 from 2014-1...
- Blackouts: Annually 10-23 to 10-24 M - 10:00 to 12:00
- Targets: 10.70.244.46 10.70.244.6, 10.70.244.5 10.70.244.4
- Exclusions: 10.70.33.18
- Last Completed Scan: 2015-07-24 13:36

*It's quick and easy to configure scans and view their status through the TrustKeeper web portal*